

Enrico Ratti

*SILVANUS MUTICUS* SHARP, 1899: AN AMERICAN SILVANID  
FOUND OUT-OF-DOORS IN TWO GREEK ISLANDS  
(Coleoptera Cucujoidea Silvanidae)

**Riassunto.** *Silvanus muticus* Sharp, 1899: un silvanide americano catturato all'aperto in due isole della Grecia (Coleoptera Cucujoidea Silvanidae).

E' segnalata la cattura in campo di due esemplari del Silvanide Centro- e Nord-Americano *Silvanus muticus* Sharp, 1899 nelle isole greche di Ios (Cicliadi) e Creta. *S. muticus* e l'affine specie europea *Silvanus bidentatus* (Fabricius, 1792) sono confrontate ed illustrate. E' inoltre fornito un elenco delle specie extra-europee di *Silvanus* Latreille, 1804 e generi affini (*Cathartosilvanus* Grouvelle, 1912 e *Parasilvanus* Grouvelle, 1912) intercettate sino a oggi in porti o depositi di legname europei.

**Summary.** Out-of-doors records of the American *Silvanus muticus* Sharp, 1899, from the Greek islands of Ios (Cyclades) and Crete are reported. *S. muticus* and the closely related European *Silvanus bidentatus* (Fabricius, 1792) are compared and illustrated. An updated checklist of the species of *Silvanus* Latreille, 1804 and closely related genera (*Cathartosilvanus* Grouvelle, 1912 and *Parasilvanus* Grouvelle, 1912), which have been intercepted at European harbours or timber-yards, is given.

*Silvanus muticus* Sharp, 1899 is a Nearctic and Neotropical species, comparatively rare in America, where it ranges from Guatemala to Canada. It is usually found beneath bark of several trees (*Juniperus*, *Pinus*, *Acer*, *Quercus*, *Castanea*), and at light (HALSTEAD, 1973).

In Europe, *S. muticus* was intercepted several times in Italy, beneath bark of trunks imported from America into the harbour of Venice (Ratti in ANGELINI et al., 1995), between 1965 and 1973 (in part examined by D.G.H. Halstead). Further European records are unknown to me.

Dr. Lorenzo Zanella, during a cruise in the Aegean Sea in 1988, collected two specimens of *S. muticus* in the Greek islands of Crete and of Ios, respectively. Dr. Zanella kindly informed me that the beetles were positively not found beneath bark, and most likely were collected in flight.

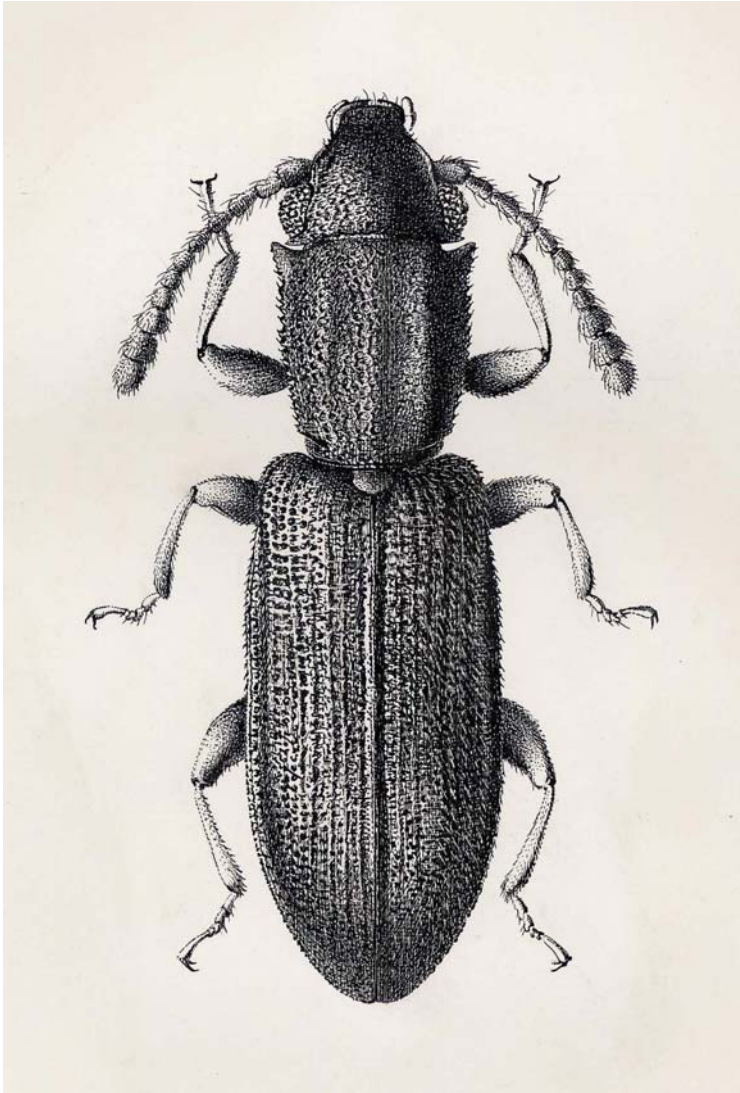
The updated European records of *S. muticus* (specimens kept in the collections of the Natural History Museum, Venice) are:

ITALY, Venice harbour, timber-yard beneath bark of imported trunks: 6.II.1965, L. Rampini leg. (1 ex.); IX-X.1968, L. Rampini leg. (3 ex.); IX-X.1970, L. Rampini leg. (3 ex.); 21.X.1973, E. Ratti leg. (65 ex.).

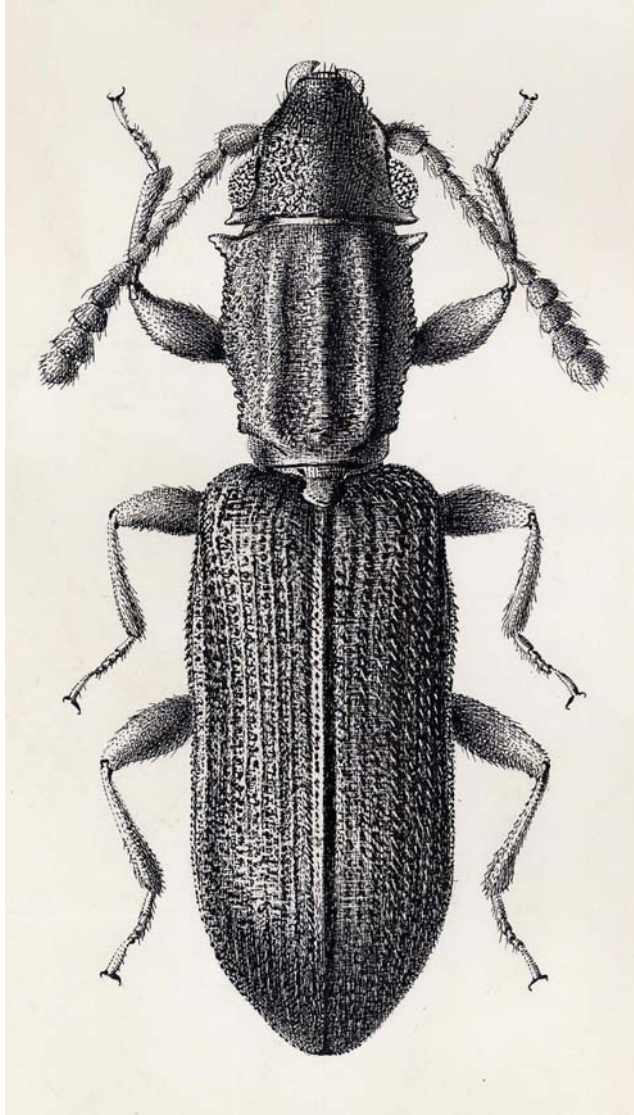
GREECE, Crete Isl., Ayios Nikolaos, out-of-doors: 26.VI.1988, L. Zanella leg. (1 ex.).

GREECE, Cyclades, Ios Isl., Ios, out-of-doors: 13.VI.1988, L. Zanella leg. (1 ex.).

*Silvanus muticus* Sharp, 1899 (fig. 1) is closely related to the Palaearctic *Silvanus bidentatus* (Fabricius, 1792) (fig. 2), and it is often misidentified with the latter species in American collections.



**Fig. 1.** *Silvanus muticus* Sharp, 1899, from Greece, Ios Isl. (length: 3.0 mm). Drawing by G. D'Este.



**Fig. 2.** *Silvanus bidentatus* (Fabricius, 1792), from Italy, Piemonte, Novara, Passo della Colma (length: 3.4 mm).  
Drawing by G. D'Este.

It may be distinguished from *bidentatus* mainly as follows: temples narrower, anterior angles of pronotum gradually (and not abruptly) developed, foveae of thorax shallower, male metafemoral tooth (if present) less prominent (see also HALSTEAD, 1973, for full description).

Several exotic species of *Silvanus* Latreille, 1804 and closely related genera (*Cathartosilvanus* Grouvelle, 1912; *Parasilvanus* Grouvelle, 1912) were intercepted at European harbours or exotic timber-yards (mostly on imported timber, rarely on stored products) in recent years, namely:

- Silvanus castaneus* MacLeay, 1873, Oriental and Australian – Britain (HALSTEAD, 1973).  
*Silvanus difficilis* Halstead, 1973, Oriental and Australian – Britain (HALSTEAD, 1973).  
*Silvanus inarmatus* Wollaston, 1867, Afrotropical – Italy (RATTI, 1972; Ratti in ANGELINI et al., 1995); Britain (HALSTEAD, 1973).  
*Silvanus lateritius* (Broun, 1880), Australian and imported elsewhere – Britain (HALSTEAD, 1973); Italy (Ratti in ANGELINI et al., 1995).  
*Silvanus lewisi* Reitter, 1876, Paleotropical and Australian - Britain (HALSTEAD, 1973); Italy (Ratti in ANGELINI et al., 1995).  
*Silvanus mediocris* Grouvelle, 1889, Afrotropical - Italy (Ratti in ANGELINI et al., 1995).  
*Silvanus muticus* Sharp, 1899, Nearctic to Guatemala – Italy (Ratti in ANGELINI et al., 1995); Greece, out-of-doors (present paper).  
*Silvanus productus* Halstead, 1973, Oriental - Britain (HALSTEAD, 1973).  
*Silvanus proximus* Grouvelle, 1904, Afrotropical (introduced into Neotropics) - Britain (HALSTEAD, 1973); Italy (Ratti in ANGELINI et al., 1995).  
*Silvanus recticollis* Reitter, 1876, Paleotropical – Italy (Sardinia), out-of-doors (FANCELLO, 1986).  
*Cathartosilvanus imbellis* (Leconte, 1854), Nearctic and Neotropical ? - Italy (Ratti in ANGELINI et al., 1995).  
*Cathartosilvanus trivialis* (Grouvelle, 1878), Nearctic and Neotropical - Italy (Ratti in ANGELINI et al., 1995).  
*Cathartosilvanus vulgaris* (Grouvelle, 1878), Neotropical to Mexico - Britain (HALSTEAD, 1973).  
*Parasilvanus fairmairei* (Grouvelle, 1883), Afrotropical - Italy (RATTI, 1972; Ratti in ANGELINI et al., 1995); Britain (HALSTEAD, 1973).  
*Parasilvanus ocellatus* (Grouvelle, 1889), Afrotropical - Britain (HALSTEAD, 1973); Italy (Ratti in ANGELINI et al., 1995).  
*Parasilvanus pulcher* (Grouvelle, 1905), Afrotropical - Italy (Ratti in ANGELINI et al., 1995).

*S. muticus* is the second exotic species of *Silvanus* found out-of-doors in Europe in recent years: two specimens of the Paleotropical *Silvanus recticollis* Reitter, 1876 were, in fact, captured in 1985 in Sardinia (Macchiareddu near Cagliari), under bark-scales of living *Eucalyptus* sp. trees (FANCELLO, 1986).

Both species are potentially able to become breeding species in the Mediterranean countries.

#### References

- ANGELINI F., AUDISIO P., DE BIASE A., POGGI R., RATTI E., ZAMPETTI M. F., 1995 – Coleoptera Polyphaga X (Clavicornia I). In: Minelli A., Ruffo S. & La Posta S. (eds.), Checklist delle specie della fauna italiana, 55. *Calderini*, Bologna.
- FANCELLO L., 1986 - Contributi alla geonomia della coleotterofauna italiana. *Boll. Ass.Romana Entomol.* 40 (1985) 1986: 23-29.
- HALSTEAD D. G. H., 1973 – A revision of the genus *Silvanus* Latreille (s. l.) (Coleoptera: Silvanidae). *Bull. Br. Mus. Nat. Hist. (Ent.)* 29 (2): 37-112.
- RATTI E., 1972 - I Cucujidae (s. lat.) della Laguna di Venezia (Coleoptera). *Boll. Mus.Civ. Stor. Nat. Venezia* 22\23 (1969/70) 1972: 133-141.

#### Author's address:

Dr. Enrico Ratti, Museo civico di Storia Naturale, S. Croce 1730, I-30135 Venezia (Italy).  
E-mail: enrico.ratti@comune.venezia.it